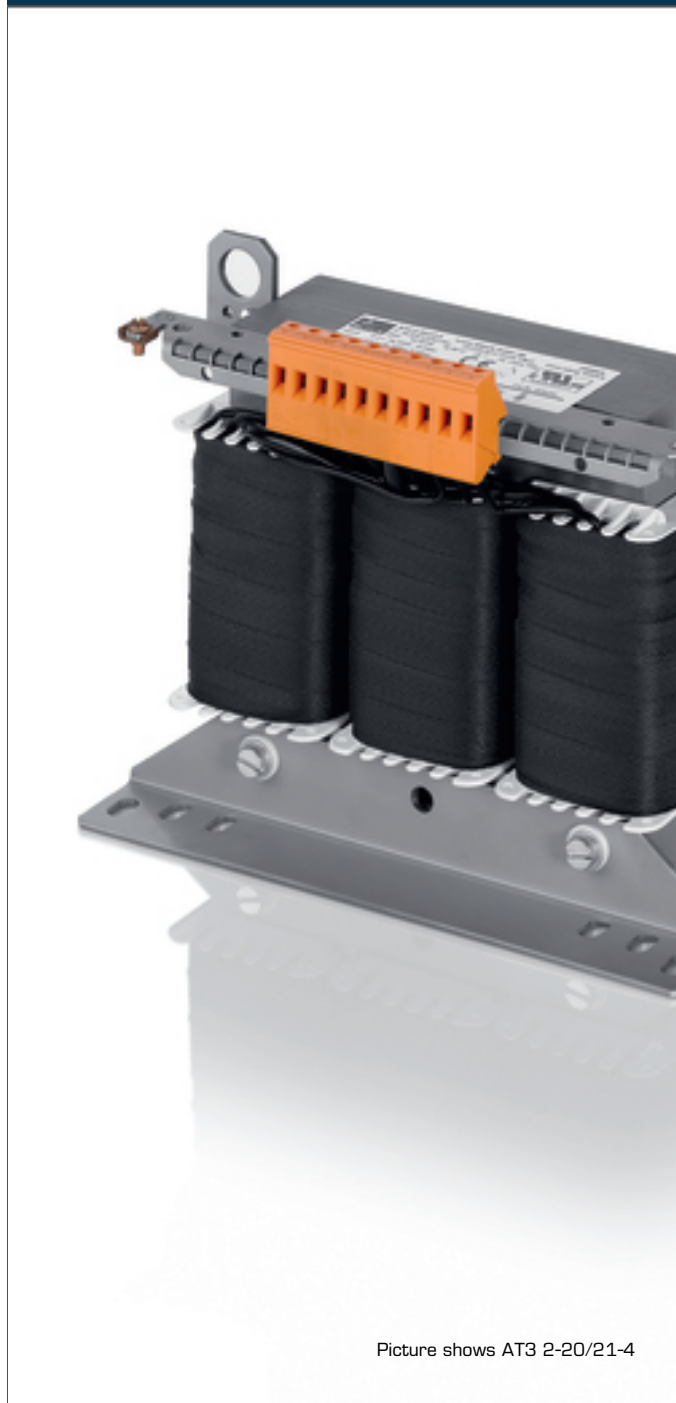


# Autotransformer AT3 25-20/21-4



Picture shows AT3 2-20/21-4

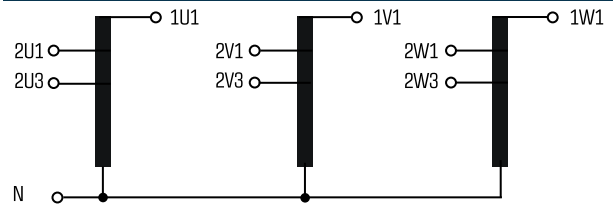
## Advantages

Low weight and small size (compared to isolating transformers)
Very high efficiency
Patented assembly technology to lower heat losses
Very good corrosion protection and low noise thanks to vacuum impregnation
Fixed, contact protected screw connection terminals complying with UVV BGV A3
Multifunctional fixing rails with 12 oval slots
Enlarged fixing rail for easy installation from above
Integrated crane eyes

## Applications

Autotransformer for adjustment of the voltage on the input and output sides with no requirement for electrical isolation.

## Sample application



## Standards

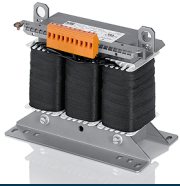


Autotransformer  
to: VDE 0570 Teil 2-13, DIN EN 61558-2-13, EN 61558-2-13,  
IEC 61558-2-13, UL 5085-1/-2, CSA 22.2 No.66

## Approvals



UL 5085-1/-2, CSA 22.2 No.66



# Autotransformer AT3 25-20/21-4

Type		AT3 25-20/21-4
Electrical data	Input	
	Rated input voltage	3 x 200/208 Vac
	Rated frequency	50 - 60 Hz
	Output	
	Rated output voltage	3 x 400 Vac
	Rated Power	25.000 VA
	Vector group	YNΔ0
	Efficiency	97.0 %
	Approvals	
	Approvals	cURus
	Environment	
	Ambient temperature max.	40 °C
	Safety and protection	
	Type	Open type
	Insulation class	F
	Protection index	IP 00
	Safety class (prepared)	I
	Short circuit strength	non-short-circuit proof
Test voltage	4000 Vac, 50 Hz	
Order numbers		
Recommended enclosure		
<b>Order Number</b>	<b>AT3 25-20/21-4</b>	

Type		AT3 25-20/21-4
Mechanical data	Terminal and mounting	
	Fixing method	Fixing rail
	Fixing screws	M10
	Terminals	Screw-type terminals
Measures and weights		
	Core type	3 UI 210/88
	Weight	103.0 kg

